

Huebsch is the answer.



Coin
30 and 45 lb TwinStar™
Stack Tumblers





Huebsch is the answer.

Anybody can sell you laundry equipment and discuss the merits of each nut and bolt. However, at Huebsch, our priority is answering your questions about how working with us will make your business easier to run and more profitable.

Customers have selected Huebsch products for their ease of use, supreme durability and because owning a Huebsch product brings a service and support network that's unmatched within the industry. For profitability, reliability and ease of use, Huebsch is the answer.

Profit Power

How are Huebsch TwinStar30™ and TwinStar45™s the answers to increasing my laundry's profitability?

Extra capacity.

This business is all about turns and getting people in and out fast. Huebsch TwinStars™ offer two drying pockets in the space of one single, helping your laundry better handle peak periods.

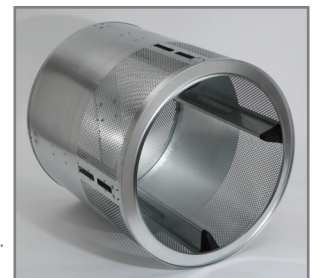
Working together.

While the TwinStar30™ is a profitable unit, pairing the TwinStar45™ with it can offer a 44% increase in profit per square foot of tumblers. Customers are drawn to the time savings of large-capacity washer-extractors and they'll also pay a premium vend for the large pockets of the TwinStar45™.

Highly efficient.

Huebsch TwinStar™ stacks utilize an axial airflow process, which reduces energy consumption and produces some of the industry's fastest dry times.

This innovative drying process directs all heated air through the load at the optimum time in the tumble process. Faster drying times help your customers accomplish their No. 1 goal — getting in and out fast. Satisfied customers become regular customers, increasing your store's profitability.



Quality You Can Touch

I want equipment that helps my store present an image of quality. How do Huebsch TwinStar30™ and TwinStar45™'s help accomplish this goal?

Rugged doors.

TwinStar™ doors are made of stainless steel to resist chipping and incorporate durable latches and hinges, to stand up to years of wear and stay looking good. Customers will see, feel and hear the quality when they open or close the door.

Stainless quality.

Adding optional stainless steel front panels and cylinders to the TwinStars™ gives your laundry a classy look that attracts customers and reinforces that they are using high-quality equipment. Customers come back when they get quality results from quality equipment.

Staying in control.

TwinStar™ models can be configured with either a programmable electronic control or an electro-mechanical control. Both deliver the drying options and ease of use customers desire. These options enable them to achieve the best possible results no matter the load they are drying. A large, digital display on the electronic control yields further customer satisfaction by keeping them apprised of the time remaining on their cycle.



Easy To Own

How do TwinStar™ models make things easier on me as an owner?

Easy installation.

With single gas, electrical and exhaust connections, installation of a TwinStar™ is inexpensive when compared to installing twice the number of single units.

Damage resistant.

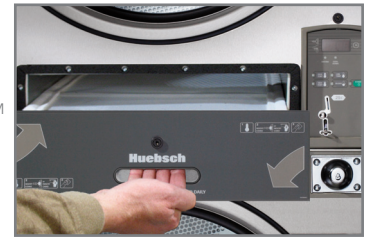
Drywall screws that fall out of customers' pockets may damage other brands of tumblers, but NOT Huebsch. Our patented oblong cylinder perforations enable the screws to pass harmlessly through without damaging the tumblers' sweep sheets. See this industry-exclusive feature in action at www.huebsch.com.

Activation versatility.

Huebsch gives you control to choose the payment system that works best for your business. TwinStar™ models can be configured for coin or card activation.

Low maintenance.

Large lint compartments mean TwinStars™ don't have to be emptied as often as other models. In addition, a heavy-duty belt delivers a long life to reduce maintenance time and costs.



Unmatched Durability

Commercial laundry equipment is no small expense; I want peace of mind my equipment will last well into the future. What sets Huebsch apart from other brands in terms of reliability?

Not just standing behind our equipment, but standing beside you and your business.

Our made-in-America product comes with an industry-leading bond. The entire machine receives Huebsch's standard three-year warranty. In addition, Huebsch has more service representatives in the field than most brands have in their whole organization. Huebsch support is further bolstered by an online component and a help line that takes 10,000 calls per year.



*Parts only, labor not included. See Huebsch Warranty Bond for specifics.

30 and 45 lb Stack Tumbler Specifications

Models	HTT30	HTT45
Control Options	Programmable (OM), Electronic (SD)	Programmable (OM)
Dry Weight Capacity - lb (kg)	2 x 30 (13.6)	2 x 45 (20.4)
Width - in (mm)	31 1/2" (800)	34 1/2" (876)
Depth - in (mm)	42 3/4" (1086)	48 5/8" (1235)
Height - in (mm)	76 1/4" (1937)	81" (2059)
Cylinder Depth - in (mm)	26" (660)	30" (762)
Cylinder Diameter - in (mm)	30" (762)	33" (838)
Cylinder Volume - cu. ft. (liters)	10.6 (301)	14.8 (421)
Door Opening Size - in (mm)	22 11/16" (576)	26 7/8" (683)
Airflow - cfm (liters/sec.)	50 Hz: 340 (160) 60 Hz: 400 (189)	50 Hz: 500 (236) 60 Hz: 600 (283)
Energy Data	Gas Models: 50 Hz: 73,000 Btu/hr (21.4 kW) Per Pocket 60 Hz: 73,000 Btu/hr (21.4 kW) Per Pocket Steam Models: At 100 psi (6.9 bar): 3.2 BHP 111,000 Btu/hr (32.5 kW) At 15 psi (1.0 bar): 2.2 BHP 74,000 Btu/hr (21.7 kW) Electric Models: 21 kW	Gas Models: 50 Hz: 87,000 Btu/hr (25.5 kW) Per Pocket 60 Hz: 95,000 Btu/hr (27.8 kW) Per Pocket Steam Models: N/A Electric Models: N/A
Electrical Specifications	Gas and Steam 100/200-220/60/1 2W+G 22.0/11.6 200/60/1 2W+G N/A 120/208-240/60/1 2W/3W+G 16.0/8.0 208-240/60/1 3W+G N/A 200-208/240/60/3 3W+G 6.4/6.4 380/60/3 3W+G 3.0 460-480/60/3 3W+G 3.3 100/200/50/1 2W+G 24.2/15.0 200/50/1 2W+G N/A 230-240/50/1 2W+G 15.0 200/50/3 3W+G 5.8 230-240/50/3 3W+G 7.0 380/400-415/50/3 3W+G 3.0/3.2 Electric 200-208/60/3 3W+G 62/PKT 240/60/3 3W+G 54/PKT 380/60/3 3W+G 33/PKT 460-480/60/3 3W+G 27/PKT 200/50/3 3W+G 60/PKT 230-240/50/3 3W+G 55/PKT 380/50/3 3W+G 33/PKT 400-415/50/3 3W+G 31/PKT	Amps: N/A 11.2 N/A 12.0 9.6/9.6 N/A N/A 11.2 10.8 N/A N/A N/A
Plumbing Connections - in	Gas: 1/2" - NPT Steam: 3/4" - NPT	Gas: 1/2" - NPT
Shipping Dimensions	Width 32 1/2" (825) Depth 47" (1194) Height 81" (2057)	Width 35 1/2" (902) Depth 54" (1372) Height 85" (2159)
Net Weight - lb (kg)	544 (247)	673 (305)
Shipping Weight - lb (kg)	582 (264)	718 (326)
Agency Approvals	Electric/Steam: CSA, CE Gas: CSA Star, CSA Flame	Gas: CSA Star, CSA Flame

Tumbler models are made to suit a variety of electrical service characteristics. See your Huebsch distributor for specifications. For further details on installation, refer to Installation, Operation and Maintenance instructions supplied with the tumbler. USA and Canada models are certified by C.S.A International.

For the most accurate information, the installation guide should be used for all design and construction purposes. Due to continuous product improvements, design and specifications subject to change without notice. The quality management system of Alliance Laundry Systems' Ripon facility has been registered to ISO 9001:2000.

Printed in the U.S.A. ©Copyright 2009 Alliance Laundry Systems LLC

