

Huebsch is the answer.



Vended
25-35 and 55 lb
Tumble Dryers





Huebsch is the answer.

Anybody can sell you laundry equipment and discuss the merits of each nut and bolt. However, at Huebsch, our priority is answering your questions about how working with us will make your business easier to run and more profitable.

Customers have selected Huebsch products for their ease of use, supreme durability and because owning a Huebsch product brings a service and support network that's unmatched within the industry. For profitability, reliability and ease of use, Huebsch is the answer.

Profit Power

How are Huebsch tumble dryers the answer to increasing my laundry's profitability?

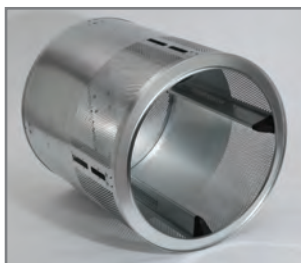
Extra capacity.

This business is all about turns and getting people in and out fast. Huebsch tumble dryers, offered in 25, 30, 35 and 55 lb models, do just that. Even the 25 lb model boasts a spacious 7.7 cu. ft. cylinder for efficient drying of large loads, ultimately offering great profit potential due to its speed and efficiency.

Highly efficient.

Huebsch tumble dryers utilize an axial airflow process, which reduces energy consumption and produces some of the industry's fastest dry times.

This innovative drying process directs all heated air through the load at the optimum time in the tumble process. Faster drying times help your customers accomplish their No. 1 goal — getting in and out fast. Satisfied customers become regular customers, increasing your store's profitability.



Working together.

Huebsch tumble dryers available in both single and stack pocket configurations give your store a greater variety of drying options.

A Unique Product

I love the efficiency of axial airflow tumble dryers, but my store needs larger capacity. How can Huebsch help?

The answer for extra capacity in a small package.

The newest addition to the line delivers a 55 lb capacity, yet is 4" narrower and a foot shorter than our standard 50 lb model.

The perfect blend of speed and efficiency.

Not only does the 55 lb take up less space than its 50 lb radial airflow counterpart, but it's extremely fast and efficient.

Quality You Can Touch

I want equipment that helps my store present an image of quality. How do Huebsch tumble dryers help accomplish this goal?

Rugged doors.

Huebsch doors are made of stainless steel to resist chipping and incorporate durable latches and hinges, to stand up to years of wear and stay looking good.

Customers will see, feel and hear the quality when they open or close the door.



Stainless quality.

Adding optional stainless steel front panels and cylinders give your laundry a sophisticated look that attracts customers and reinforces that they are using high-quality equipment. Customers come back when they get quality results from quality equipment.

Galaxy™ 600.

The perfect complement to the Galaxy 600 Control on our washer-extractors. Laundry owners can program all Galaxy 600-controlled equipment using our patented Galaxy Vended Software, via infrared technology, and create a completely programmable laundromat. This programming tool enables owners to save time and maximize profits with the ability to modify the tumble dryer's cycle, temperature, price, time (heat, cool-down, top-off) and manage peak customer usage with "time-of-day" pricing.



Staying in control.

Huebsch models can be configured with a programmable electronic control that delivers the drying options and ease of use customers desire. These options enable them to achieve the best possible results no matter the load they are drying. A large, digital display on the electronic control yields further customer satisfaction by keeping them apprised of the time remaining on their cycle.



Easy To Own

How do Huebsch models make things easier on me as an owner?

Damage resistant.

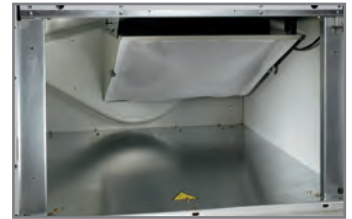
Drywall screws that fall out of customers' pockets may damage other brands of tumble dryers, but NOT Huebsch. Our patented oblong cylinder perforations enable the screws to pass harmlessly through without damaging the tumblers' sweep sheets. See this industry-exclusive feature in action at www.huebsch.com.

Activation versatility.

Huebsch gives you control to choose the payment system that works best for your business. All models can be configured for coin or card activation.

Low maintenance.

Large lint compartments mean they don't have to be emptied as often as other competition models. In addition, a heavy-duty belt delivers a long life to reduce maintenance time and costs.



Unmatched Durability

What sets Huebsch apart from other brands in terms of reliability?

Not just standing behind our equipment, but standing beside you and your business.

Our **Made-In-America** product comes with an industry-leading bond. The entire machine receives Huebsch's standard three-year warranty. In addition, Huebsch has more service representatives in the field than most brands have in their whole organization. Huebsch support is further bolstered by an online component and a help line that takes 100,000 calls per year.

*Parts only, labor not included. See Huebsch Warranty Bond for specifics.



25-35 and 55 lb Tumble Dryer Specifications

Models	HT025	HT030	HT035	HT055
Control	Galaxy™ 600, Basic Electronic	Galaxy™ 600, Basic Electronic	Galaxy™ 600, Basic Electronic	Galaxy™ 600, Basic Electronic
Dry Weight Capacity - lb (kg)	25 (11.3)	30 (13.6)	35 (15.9)	55 (24.9)
Width - in (mm)	28" (711)	28" (711)	31 1/2" (800)	34 1/2" (876)
Depth - in (mm)	40 7/8" (1038)	46 7/8" (1191)	46 7/8" (1191)	53 5/8" (1362)
Height - in (mm)	63 7/8" (1622)	63 7/8" (1622)	63 7/8" (1622)	66 3/4" (1695)
Cylinder Depth - in (mm)	24" (610)	30" (762)	30" (762)	35" (889)
Cylinder Diameter - in (mm)	26 1/2" (673)	26 1/2" (673)	30" (762)	33" (838)
Cylinder Volume - cu. ft. (liters)	7.7 (217)	9.6 (271)	12.3 (347)	17.3 (491)
Door Opening Size - in (mm)	22 11/16" (576)	22 11/16" (576)	22 11/16" (576)	26 7/8" (683)
Air Outlet Diameter - in (mm)	6" (152)	6" (152)	8" (203)	8" (203)
Airflow - cfm (liters/sec.)	50 Hz: 430 (203) 60 Hz: 500 (236)	50 Hz: 430 (203) 60 Hz: 500 (236)	50 Hz: 550 (260) 60 Hz: 650 (307)	50 Hz: 600 (283) 60 Hz: 700 (330)
Energy Data	Gas Models: 50 Hz: 64,000 Btu/hr (18.8 kW) 60 Hz: 64,000 Btu/hr (18.8 kW) Steam Models: At 100 psi (6.9 bar): 3.9 BHP, 135,000 Btu/hr (39.6 kW) Electric Models: 12 kW	Gas Models: 50 Hz: 73,000 Btu/hr (21.4 kW) 60 Hz: 73,000 Btu/hr (21.4 kW) Steam Models: At 100 psi (6.9 bar): 3.9 BHP, 135,000 Btu/hr (39.6 kW) Electric Models: 21 kW	Gas Models: 50 Hz: 90,000 Btu/hr (26.4 kW) 60 Hz: 90,000 Btu/hr (26.4 kW) Steam Models: At 100 psi (6.9 bar): 4.8 BHP, 166,000 Btu/hr (48.6 kW) Electric Models: 24 kW	Gas Models: 50 Hz: 102,000 Btu/hr (29.9 kW) 60 Hz: 112,000 Btu/hr (32.8 kW) Steam Models: N/A Electric Models: 27 kW
Electrical Specifications				
Gas and Steam	Amps:	Amps:	Amps:	Amps:
100/200-220/60/1	11.0/5.8	11.0/5.8	11.0/5.8	9.8/4.9
120/208-240/60/1	12.0/6.7	12.0/6.7	12.0/6.7	9.2/6.5
200-208/240/60/3	3.2/3.2	3.2/3.2	3.2/3.2	4.0/3.9
380/60/3	1.5	1.5	1.5	N/A
460-480/60/3	1.6	1.6	1.6	N/A
100/200/50/1	12.1/7.5	12.1/7.5	12.1/7.5	10.0/6.2
230-240/50/1	7.5	7.5	7.5	5.5
200/50/3	2.9	2.9	2.9	N/A
230-240/50/3	3.5	3.5	3.5	N/A
380/50/3	N/A	N/A	N/A	2.0
400-415/50/3	N/A	N/A	N/A	2.0
380/400-415/50/3	1.5/1.6	1.5/1.6	1.5/1.6	N/A
Electric*				
208/60/1	64	108	122	129
240/60/1	57	94	107	115
200/60/1	64	108	122	125
200-208/60/3	37	62	71	79
240/60/3	33	54	62	65
380/60/3	20	33	38	N/A
460-480/60/3	16	27	31	N/A
200/50/1	63	105	119	131
230-240/50/1	58	95	108	119
200/50/3	36	60	65	N/A
230-240/50/3	33	55	62	N/A
380/50/3	20	33	38	43
400-415/50/3	18	31	35	38
Plumbing Connection - in (mm)	Gas: 1/2" - NPT Steam: 3/4" - NPT	Gas: 1/2" - NPT Steam: 3/4" - NPT	Gas: 1/2" - NPT Steam: 3/4" - NPT	Gas: 1/2" - NPT Steam: N/A
Shipping Dimensions				
Width	30" (762)	30" (762)	33" (838)	35 1/2" (902)
Depth	43" (1092)	49" (1245)	49" (1245)	59" (1499)
Height	69" (1753)	69" (1753)	69" (1753)	72" (1829)
Net Weight - lb (kg)	299 (135)	331 (150)	361 (164)	435 (197)
Shipping Weight - lb (kg)	332 (151)	364 (165)	394 (179)	476 (216)
Agency Approvals	cCSA _{US} , CE	cCSA _{US} , CE	cCSA _{US} , CE	cCSA _{US} , CE

Tumble dryer models are made to suit a variety of electrical service characteristics. See your Huebsch distributor for specifications. For further details on installation, refer to Installation, Operation and Maintenance instructions supplied with the tumble dryer. USA and Canada models are certified by C.S.A International.

For the most accurate information, the installation guide should be used for all design and construction purposes. Due to continuous product improvements, design and specifications subject to change without notice. The quality management system of Alliance Laundry Systems' Ripon facility has been registered to ISO 9001:2000.

Printed in the U.S.A. ©Copyright 2014 Alliance Laundry Systems LLC